

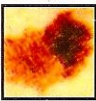


Have you checked your skin lately?

While prevention is your best defense against skin cancer, if a melanoma should develop, it is almost always curable with early detection. Check your skin regularly for changes or new lesions. Compare each mole to the pictures below for the ABCDs of skin cancer:



Asymmetry



If one half of a mole does not match the other, it may be cancerous



Border Irregularity



If the edges are ragged, notched or blurred, it may be cancerous



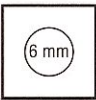
Color



If the color varies from one area to another, with shades of tan and brown, black, or sometimes white, red or blue, this may also indicate cancer



Diameter



Place the size indicator over each mole. If they are bigger than the 6mm circle, check with your doctor. Any growth of a mole should be of concern.

Reference: American Academy of Dermatology, ABCDs of Melanoma Detection, www.aad.org
Use this as a guide only. To ensure correct diagnosis, see your doctor for a skin cancer screening.
To locate a skin cancer screening facility near you, visit www.aad.org/skinscrn.html

Contributing Editor: MaryEllen Maguire-Eisen, MSN, RN, ANP, Dermatology Nurses Association Member and Skin Care Detection and Prevention Committee Chair

Brought to you by Johnson & Johnson Consumer Companies, Inc., makers of

PURPOSE
SKIN CARE PRODUCTS